

Top Reasons to Use FlamePRO® Fire Retardant Treated Wood Products

- FlamePRO fire retardant treated wood products, as described in the ICC Evaluation Services, Inc. ESR-4244, meet all U.S. major model building code requirements.
- UL Classified with an FR-S Rating for flame spread and smoke development values of 25 or less.
- FlamePRO fire retardant treated wood products comply with AWPA UC-1 and UCFA use category systems, FlamePRO treatment process meets the AWPA T1 standard.
- UL GREENGUARD GOLD Certification - FlamePRO fire retardant treated wood has undergone rigorous testing and met stringent standards for low volatile organic compound (VOC) emissions. Products certified to this criteria are suitable for use in schools, offices, and other sensitive environments.
- SCS INDOOR ADVANTAGE™ GOLD CERTIFIED - SCS Global Services has completed the evaluation of Koppers FlamePRO Treated Lumber products. Koppers FlamePRO fire retardant treated wood products meet all the necessary requirements to be certified Indoor Advantage™ Gold.
- Cal Fire Certified.
- AIA Approved Continuing Education Provider.
- FlamePRO fire retardant treated wood products are backed by a 50-Year Limited Warranty from Koppers Performance Chemicals Inc.
- Hygroscopicity testing conducted by a third party independent laboratory has confirmed that compared to untreated wood, FlamePRO fire retardant treated wood does not pick up excessive moisture under ASTM D3201 test conditions.
- 1 Hour and 2 Hour Tested Interior Wall Assembly, and 2 Hour Tested Exterior Wall Assembly (ASTM E119). For details refer to ESR Report 4244.
- The majority of common lumber and plywood species used in building construction can be treated with FlamePRO fire retardant chemicals.
- Low corrosion rates to code-approved metal fasteners and hardware.
- Optional orange color for building site recognition.
- BSD SpecLink: Master Specification Content for Architectures, Engineers, and Construction Markets.



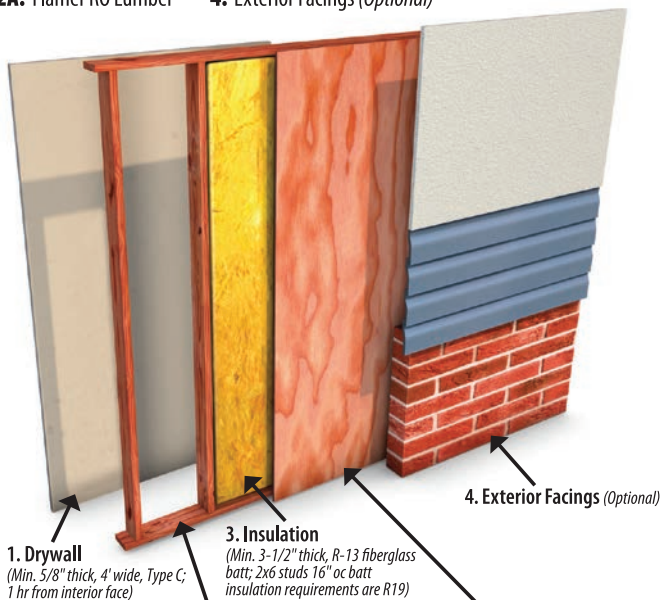
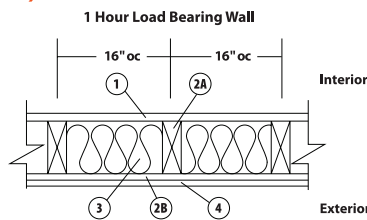
1 & 2 HOUR TESTED INTERIOR WALL ASSEMBLIES (ASTM-E119, ANSI/UL 263)

1 Hour Tested Interior Wall Assembly (60-02)

Max. Tested Load: 100% of Design Load

Fire Ratings: 1 hour, load bearing rated from one side (interior side only). For details refer to ESR Report 4244.

- 1. Drywall (Min. 5/8" thick, 4' wide, Type C; 1 hr from interior face)
- 2A. FlamePRO Lumber (Min 2x4, 16" oc - Optional color indicator for identification)
- 2B. FlamePRO Plywood (Min. 3-1/2" thick, R-13 fiberglass batt; 2x6 studs 16" oc batt insulation requirements are R19)
- 3. Insulation (Min. 3-1/2" thick, R-13 fiberglass batt; 2x6 studs 16" oc batt insulation requirements are R19)
- 4. Exterior Facings (Optional)



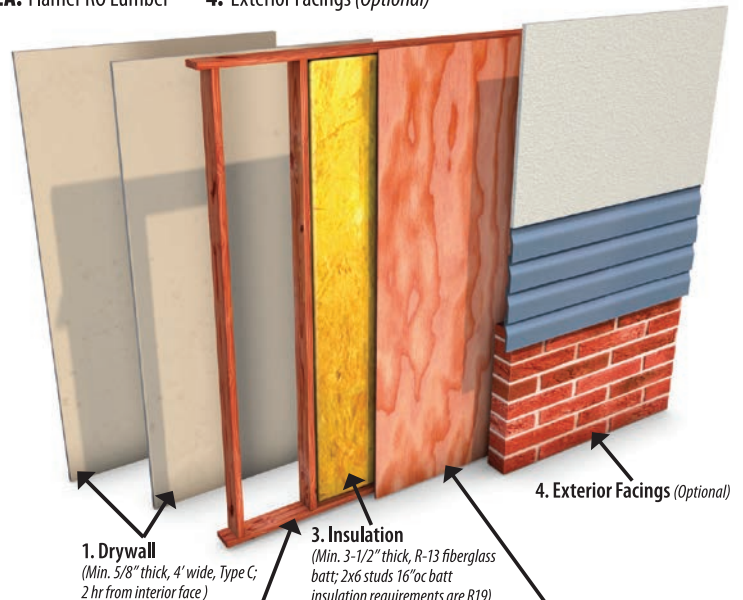
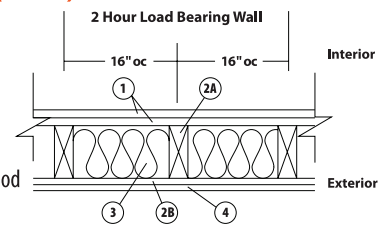
- 1. Drywall (Min. 5/8" thick, 4' wide, Type C; 1 hr from interior face)
- 2A. FlamePRO Fire Retardant Treated Lumber (Min 2x4, 16" oc - Optional color indicator for identification)
- 2B. FlamePRO Fire Retardant Treated Plywood (Min 15/32" thick - Optional color indicator for identification)
- 3. Insulation (Min. 3-1/2" thick, R-13 fiberglass batt; 2x6 studs 16" oc batt insulation requirements are R19)
- 4. Exterior Facings (Optional)

2 Hour Tested Interior Wall Assembly (120-01)

Max. Tested Load: 100% of Design Load

Fire Ratings: 2 hour, load bearing rated from one side (interior side only). For details refer to ESR Report 4244.

- 1. Drywall (Min. 5/8" thick, 4' wide, Type C; 2 hr from interior face)
- 2A. FlamePRO Lumber (Min 2x4, 16" oc - Optional color indicator for identification)
- 2B. FlamePRO Plywood (Min. 3-1/2" thick, R-13 fiberglass batt; 2x6 studs 16" oc batt insulation requirements are R19)
- 3. Insulation (Min. 3-1/2" thick, R-13 fiberglass batt; 2x6 studs 16" oc batt insulation requirements are R19)
- 4. Exterior Facings (Optional)



- 1. Drywall (Min. 5/8" thick, 4' wide, Type C; 2 hr from interior face)
- 2A. FlamePRO Fire Retardant Treated Lumber (Min 2x4, 16" oc - Optional color indicator for identification)
- 2B. FlamePRO Fire Retardant Treated Plywood (Min 15/32" thick - Optional color indicator for identification)
- 3. Insulation (Min. 3-1/2" thick, R-13 fiberglass batt; 2x6 studs 16" oc batt insulation requirements are R19)
- 4. Exterior Facings (Optional)

See other side for Tested Exterior Wall Assemblies.

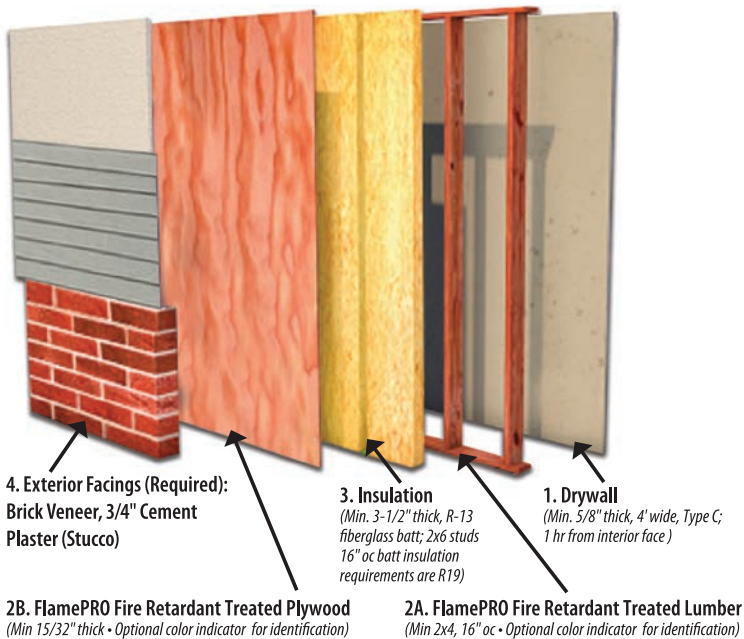
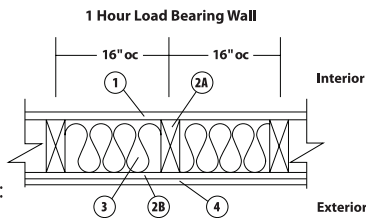
1 & 2 HOUR TESTED EXTERIOR WALL ASSEMBLIES (ASTM-E119, ANSI/UL 263)

1 Hour Tested Exterior Wall Assembly (60-01)

Max. Tested Load: 100% of Design Load

Fire Ratings: 1 hour, load bearing rated from interior and exterior. For details refer to ESR Report 4244.

- 1. Drywall (1 hr from interior face)
- 2A. FlamePRO Lumber
- 2B. FlamePRO Plywood
- 3. Insulation
- 4. Exterior Facings (Required):
Brick Veneer, 3/4" Cement Plaster (Stucco)

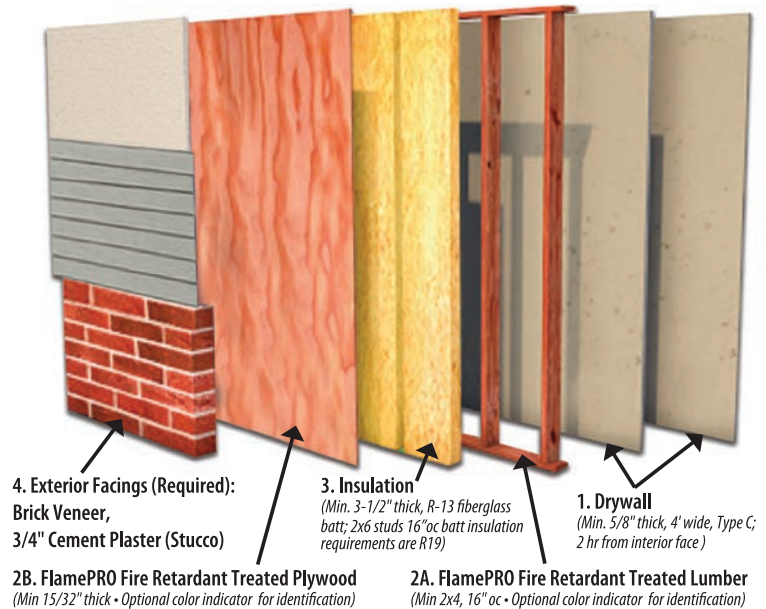
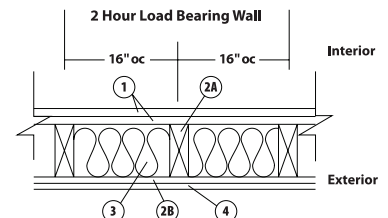


2 Hour Tested Exterior Wall Assembly (120-02)

Max. Tested Load: 100% of Design Load

Fire Ratings: 2 hour load bearing rated from interior and 1 hour load bearing exterior. For details refer to ESR Report 4244.

- 1. Drywall (2 hr from interior face)
- 2A. FlamePRO Lumber
- 2B. FlamePRO Plywood
- 3. Insulation
- 4. Exterior Facings (Required):
Brick Veneer, 3/4" Cement Plaster (Stucco)

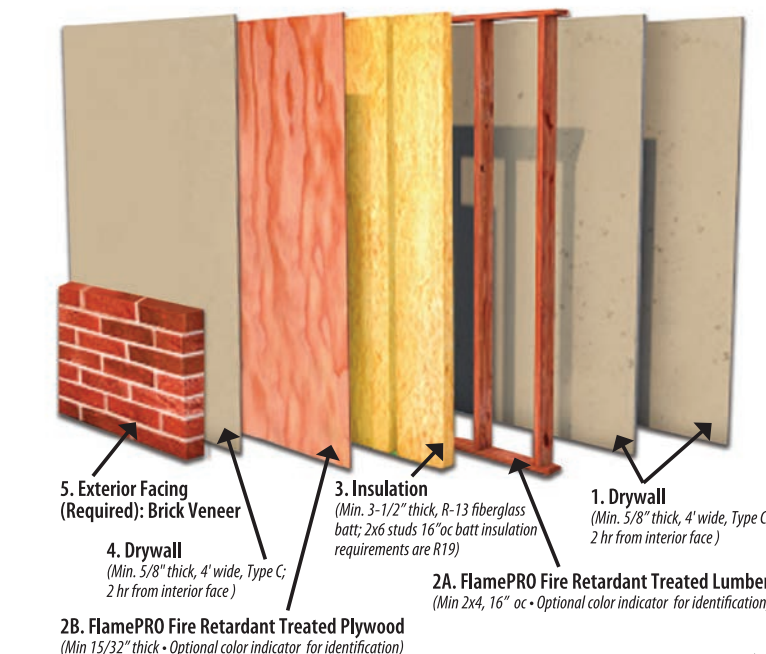
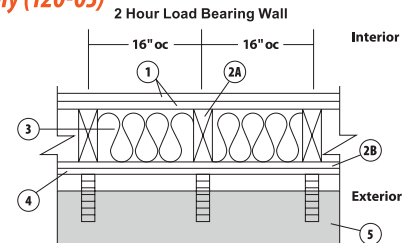


2 Hour Tested Exterior Wall Assembly (120-03)

Max. Tested Load: 100% of Design Load

Fire Ratings: 2 hour load bearing rated from interior and 1 hour load bearing exterior

- 1. Drywall (2 hr from interior face)
- 2A. FlamePRO Lumber
- 2B. FlamePRO Plywood
- 3. Insulation
- 4. Drywall
- 5. Exterior Facings (Required):
Brick Veneer



This is not a standalone document. Read in conjunction with other FlamePRO literature.

IMPORTANT INFORMATION

Access the link below or QR code to read before handling treated wood.

Guidelines for use, handling and disposal of treated wood products. These guidelines contain compliance information required by the California Department of Toxic Substances Control.

kopperspc.com/flamepro/important-information.html

Access the link below or QR code for information on how to safely dispose of treated wood waste in California.

twwdisposal.org

50-YEAR WARRANTY

Access the link below or QR code or the FlamePro 50-Year Warranty

kopperspc.com/flamepro/flamepro-warranty.html



www.allweatherwood.com

www.kopperspc.com